

# Annual Report

2021

## INSIDE THIS ISSUE:

2021 Budget	2
2021 Road Projects	3
2021 Grant/ Bridge Projects	4
2021 0.25% Sales Tax Resurfacing	5
2021 Bridge Summary	6
2022 Equipment Needs	8

March 3rd, 2022 - A lot of changes have happened since the last report.

We have had our issues during this pandemic, but things seem to be improving. This winter was especially tough due to quite a few people being off work for extended periods of time. The crews did an excellent job of filling in the gaps for those who were not able to work. During a couple winter storms, we had some drivers working snow routes they never have been on before, or sometimes they were plowing without a rider to assist them. I am happy and thankful to report that everyone is doing okay and are able to be back at work.

We had a number of retirements and personnel changes this past year. We have a new Road Superintendent. Tom Hipp has stepped up to take this important role in the County Highway Department to replace the now retired Merle Yoder. Tom has 15 years of service to the County and I'm sure he will do a great job in this role.

The citizens of Holmes County and visitors have seen a significant improvement in the condition of our County roads over the past five years with the 0.25% sales tax. We have improved over 125 miles of our 250 miles of roads. I am very thankful to report that the sales tax for roads was overwhelmingly renewed by the voters this past November. We are planning for, and ready to improve the remaining 125 miles over the next five years.

This year we are planning to improve just over 30 miles: CR 75 – 4.96 Miles, CR 77 – 3.58 Miles (From SR 62-Bunker Hill to SR 241-Mt Hope), CR 150 – 5.0 Miles, CR 201 – 4.18 Miles (From SR 39 to SR 241), CR 235 – 2.99 Miles, CR 318 – 3.25 Miles, CR 314 – 2.23 Miles, and CR 600 – 4.51 Miles.

We are planning to replace 7 bridges this year with our own crews, which include CR 50-0146, CR 53-0004, CR 135-0291, CR 150-0013, CR 600-0406, TR 264-0093 and TR 267-0116. 3 bridge projects will be funded by grant funds and include CR 19-0213 at \$1.1 million, TR 123-2.17 at \$1.1 million and CR 23-2.28 at \$5 million.

Over the past year we have had some supply chain issues. For example, our centerline and edge line striping material was stuck in a port for a month, so the contractor was delayed in performing the work. We also ordered three dump trucks last year, but have no idea when we will get them. I am hopeful we get them before this coming snow season.

Another challenge this year will be inflation. Over the past year we have seen dramatic price increases in the material and labor costs to build contracted projects. I'm estimating jobs are costing about 25% more to build this year from over a year ago. This can not be sustained, and adjustments to the work planned may have to be made if this trend continues.

Given all that we have been and continue to go through, we will continue to the best of our ability to serve the people of Holmes County by providing them with a safe and improved transportation system.

Holmes County is a wonderful place to live and work!!

I respectfully submit this annual report required by Ohio Revised Code Ch. 5543.

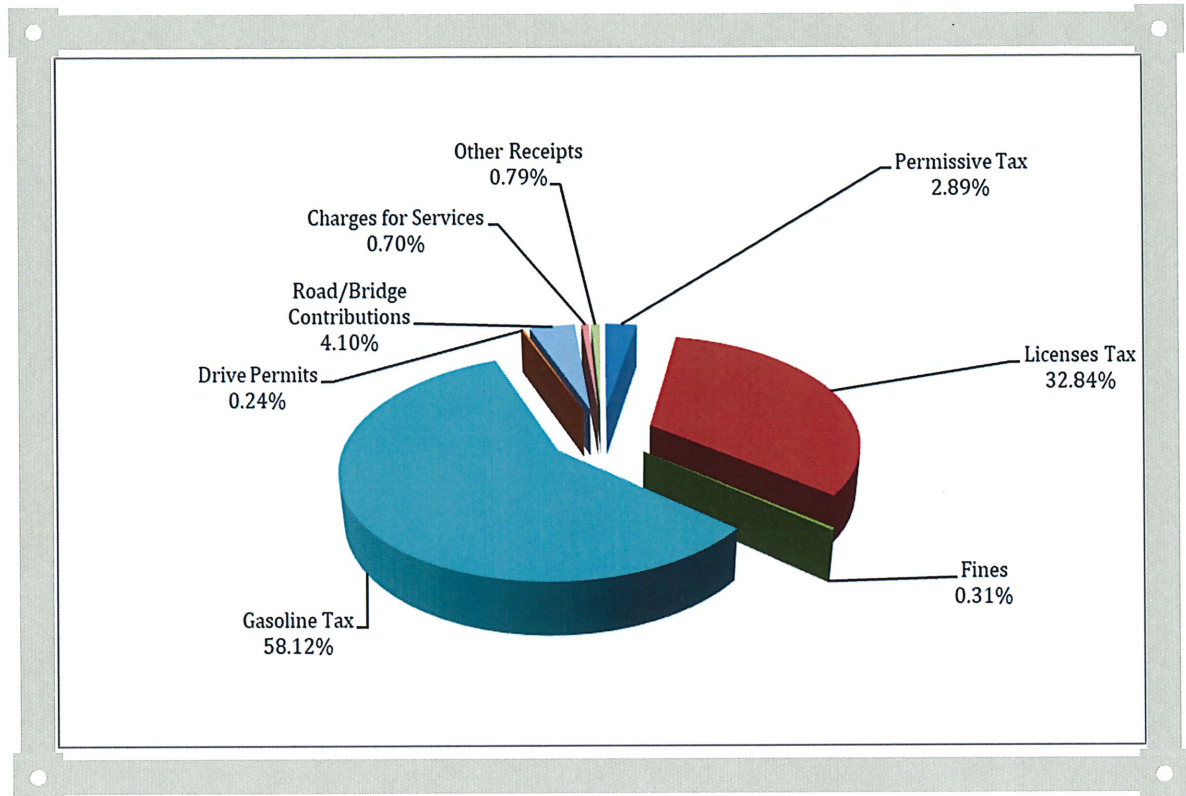


Christopher R. Young, P.E., P.S - Holmes County Engineer

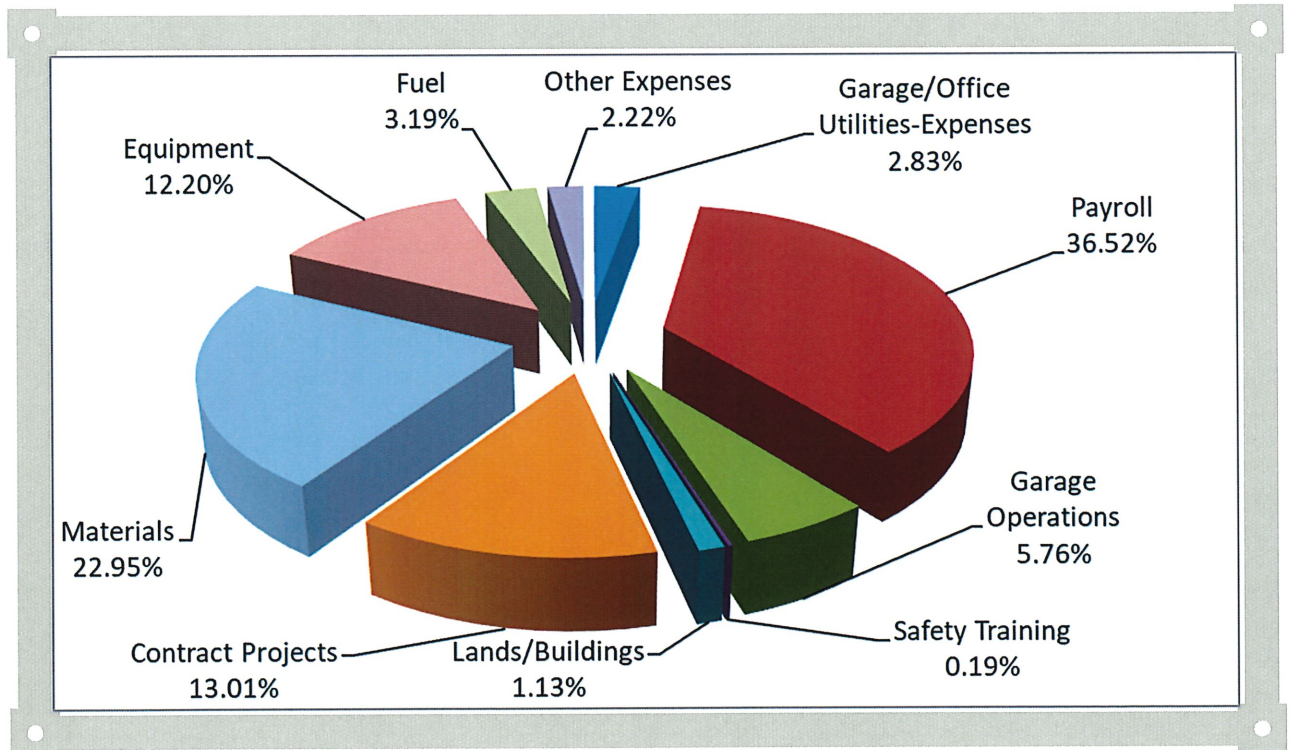


# 2021 BUDGET

## WHERE THE MONEY COMES FROM ....



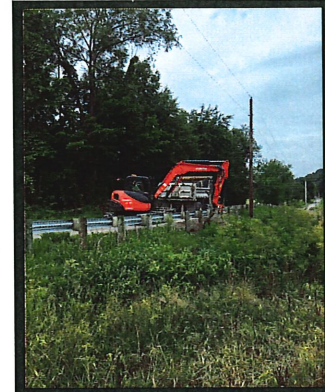
## HOW THE MONEY WAS SPENT ....



# 2021 ROAD PROJECTS

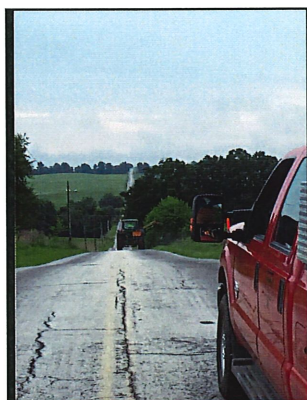


Road Reclamation/Grinding



Ditching

2021 Road Projects	Equipment	Labor	Material	Total
Culverts/Catch Basins Install & Repaired	\$100,157.95	\$73,613.67	\$70,157.29	\$243,928.91
Snow/Ice Removal	\$97,150.63	\$71,239.33	\$137,410.99	\$305,800.95
Ditching	\$53,649.10	\$35,427.18	\$13.00	\$89,089.28
Patching	\$24,532.30	\$27,500.31	\$12,340.50	\$64,373.11
Hauling Stock	\$12,887.66	\$6,271.78	\$0	\$19,159.44
Berming/Washout Repairs	\$28,002.46	\$28,705.27	\$10,207.24	\$66,914.97
Mowing/Weed Control	\$103,218.26	\$95,883.26	\$0	\$199,101.52
Brush & Tree Removal	\$18,788.13	\$22,060.02	\$0	\$40,848.15
Signage	\$23,191.70	\$28,958.59	\$0	\$52,150.29
Equipment Moving	\$8,037.65	\$7,672.01	\$0	\$15,709.66
Road Reclamation/Grinding	\$59,188.08	\$16,241.73	\$15,130.36	\$90,560.17



Mowing



# 2021 GRANT/BRIDGE/CONTRACT PROJECTS

## CONTRACT

### Holmes County Striping

Local Funds      \$49,307.72

**Total              \$49,307.72**

45.74 miles of Centerline Striping  
on various county roads.

### Hazardous Obstruction Removal

Local Funds      \$236,045

**Total              \$236,045**

Removal of hazardous trees along  
various county road right-of-way's.

## BRIDGES

TR 110 - 0185    \$79,513.80  
TR 615 - 0068    \$78,757.29

Misc. Bridge Repairs \$132,103.90

**Total    \$290,374.99**



## 2021 0.25% SALES TAX RESURFACING

<u>Road</u>	<u>Mileage</u>
CR 10	1.059
CR 23	2.900
CR 52	5.532
CR 88	0.448
CR 100	2.539
CR 101	0.161
CR 135	3.033
CR 140	2.241
CR 186	2.925
CR 187	0.282
CR 230	0.678
CR 320 (CR 329 to Holmesville Corp)	0.364
CR 329	4.754
CR 330	2.336
CR 390	0.263
CR 407	4.811
CR 620	1.479
CR 622	1.382

**\*Total Miles Resurfaced (Sales Tax) 37.19**

Melway Paving was awarded the project as the lowest and best qualified bidder, and performed the work at a cost of \$3,016,883.28. The Holmes County Highway Department performed the preparation work, such as grinding on the roads that were to be resurfaced. The cost of the grinding was \$90,560.17. These preparation costs were from local funding, and include equipment, labor, and material. The total overall cost of the project was \$3,107,443.45.

The total cost of the project includes; reclaiming, resurfacing, and berming. \$215,000.00 of the project costs were paid for by an OPWC grant. \$750,000.00 of the project costs were financed through an OPWC loan, which will be paid back as the 0.25% sales tax fund increases. The remaining cost of the project was paid from the 0.25% sales tax funds.



## 2021 BRIDGE SUMMARY

Condition	Bridges
9 - Excellent	17
8 - Very Good	27
7 - Good	75
6 - Satisfactory	119
5 - Fair	40
4 - Poor	5
3 - Serious	0
2 - Critical	0
1 - Immanent Failure	0

Sufficiency Rating	Bridges
90-100	98
80-90	93
70-80	48
60-70	21
50-60	13
40-50	7
30-40	2
<30	1

Road Type	Bridges
County Roads	101
Township Roads	182
Total	283



## 2021 BRIDGE SUMMARY

ROAD	SLM	GROSS	2 Axles	3 Axles	4 Axles	5 Axles	6 Axles	EV1	EV2
C0019	0584		15 T	23 T	27 T	31 T	33 T	-	-
C0023	0234	-	15 T	22 T	24 T	26 T	26 T	-	-
C0050	0146	30 T	-	-	-	-	-	-	-
C0053	0004	-	-	-	-	-	-	15 T	23 T
C0058	0551	30 T	-	-	-	-	-	-	-
C0058	0557	30 T	-	-	-	-	-	-	-
C0061	0163	-	15 T	23 T	27 T	30 T	30 T	-	-
C0101	0005	-	14 T	14 T	15 T	16 T	16 T	-	-
C0160	0649	30 T	-	-	-	-	-	-	-
T0028	0136	-	15 T	19 T	20 T	21 T	22 T	-	-
T0064	0010	-	15 T	23 T	27 T	31 T	35 T	-	-
T0065	0113	-	15 T	23 T	27 T	28 T	28 T	-	-
T0091	0002	-	15 T	23 T	27 T	31 T	32 T	-	-
T0116	0097	-	15 T	23 T	27 T	31 T	33 T	-	-
T0118	0024	-	15 T	23 T	26 T	27 T	28 T	-	-
T0123	0221	-	14 T	14 T	15 T	16 T	16 T	-	-
T0265	0149	-	15 T	23 T	26 T	27 T	28 T	-	-
T0323	0307	-	15 T	23 T	27 T	31 T	31 T	-	-
T0346	0149	-	-	-	-	-	-	15 T	23 T
T0356	0127	-	15 T	23 T	25 T	27 T	28 T	-	-
T0417	0096	-	15 T	23 T	24 T	26 T	26 T	-	-
T0451	0153	-	15 T	23 T	26 T	30 T	34 T	-	-
T0470	0079	-	15 T	23 T	26 T	28 T	28 T	-	-
T0502	0264	-	15 T	23 T	27 T	31 T	32 T	-	-
T0551	0010	-	-	-	-	-	-	15 T	23 T
T0601	0181	-	15 T	23 T	27 T	31 T	33 T	-	-
T0604	0121	-	15 T	23 T	25 T	28 T	28 T	-	-
T0606	0680	-	15 T	23 T	27 T	31 T	35 T	-	-
T0606	0995	-	15 T	23 T	26 T	27 T	28 T	-	-
T0607	0243	-	15 T	20 T	22 T	23 T	24 T	-	-
T0613	0045	-	15 T	23 T	24 T	27 T	31 T	-	-
T0652	0301	-	13 T	14 T	15 T	16 T	17 T	-	-



## 2022 EQUIPMENT NEEDS

March 3, 2022

Holmes County Commissioners  
2 Court Street, Suite 14  
Millersburg, Ohio 44654

Gentlemen:

ORC 5549.01 requires the County Engineer to file written recommendations with Board of County Commissioners on machinery, tools, and equipment that should be purchased for use during the ensuing year and estimated cost thereof.

Here is the list of items to be purchased in 2022.

Ditching Equipment (Small grader)	\$ 75,000
Three Dump Trucks Chassis, Beds & Snow Equip	\$750,000
Three Work Trucks	\$125,000
Sign Making Machine Setup	\$ 75,000
Skid Loader	\$ 75,000

Sincerely,



Christopher R. Young, P.E., P.S.

Holmes County Engineer